

Tiger Product Catalogue



Table of contents

Ceramic	P. 3 - 31
ZrO Ceramic	P. 32 - 32
Graphite	P. 33 - 44
Clay Graphite	P. 45 - 45
Investment Powder	P. 46 - 47
Wax	P. 48 - 49
Resin	P. 50 - 50
Casting Equipment	P. 51 - 52

Ceramic

Degussa



Description		
Tiger Item No.:		5000
Original Item No.:		Universal
Machine Manufacturer		Degussa
Sizes in mm		
Height:		46
Length:		72
Width:		57
Ø Spout Opening:		8

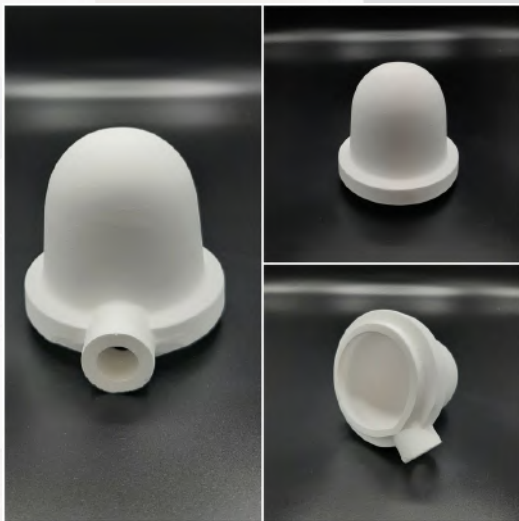


Ceramic

Erscem



Description		
Tiger Item No.:		6503
Original Item No.:		C3
Machine Manufacturer		Erscem
Sizes in mm		
Height:		124
Ø Top:		68
Ø Bottom:		57
Ø Spout Opening:		13



Description		
Tiger Item No.:		6522
Original Item No.:		C 2 (shortened)
Machine Manufacturer		Erscem
Sizes in mm		
Height:		80
Ø Top:		68
Ø Bottom:		60
Ø Spout Opening:		14



Description		
Tiger Item No.:		6523
Original Item No.:		C3 (shortened)
Machine Manufacturer		Erscem
Sizes in mm		
Height:		100
Ø Top:		68
Ø Bottom:		57
Ø Spout Opening:		13

Ceramic

Galloni



Description		
Tiger Item No.:		5101
Original Item No.:		A100.233
Machine Manufacturer		Galloni
Sizes in mm		
Height:		73
Ø Top:		44
Ø Bottom:		32
Ø Spout Opening:		7



Description		
Tiger Item No.:		5102
Original Item No.:		A100.398
Machine Manufacturer		Galloni
Sizes in mm		
Height:		74
Ø Top:		41
Ø Bottom:		32
Ø Spout Opening:		8



Description		
Tiger Item No.:		5103
Original Item No.:		/
Machine Manufacturer		Galloni
Sizes in mm		
Height:		67
Ø Top:		44
Ø Bottom:		31
Ø Spout Opening:		7

Ceramic

Galloni



Description		
Tiger Item No.:		5112
Original Item No.:		/
Machine Manufacturer		Galloni
Sizes in mm		
Height:		116
Ø Top:		70
Ø Bottom:		51
Ø Spout Opening:		9



Description		
Tiger Item No.:		5113
Original Item No.:		A100.512
Machine Manufacturer		Galloni
Sizes in mm		
Height:		82
Ø Top:		52
Ø Bottom:		38
Ø Spout Opening:		10



Description		
Tiger Item No.:		5138
Original Item No.:		A100.469
Machine Manufacturer		Galloni
Sizes in mm		
Height:		81
Ø Top:		51
Ø Bottom:		41
Ø Spout Opening:		9

Ceramic

Galloni



Description		
Tiger Item No.:		5139
Original Item No.:		A100.634
Machine Manufacturer		Galloni
Sizes in mm		
Height:		82
Ø Top:		51
Ø Bottom:		42
Ø Spout Opening:		11



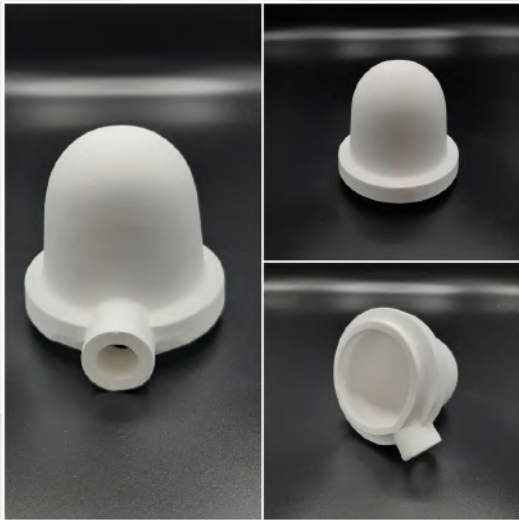
Description		
Tiger Item No.:		5150
Original Item No.:		A100.559
Machine Manufacturer		Galloni
Sizes in mm		
Height:		63
Ø Top:		43
Ø Bottom:		32
Ø Spout Opening:		11



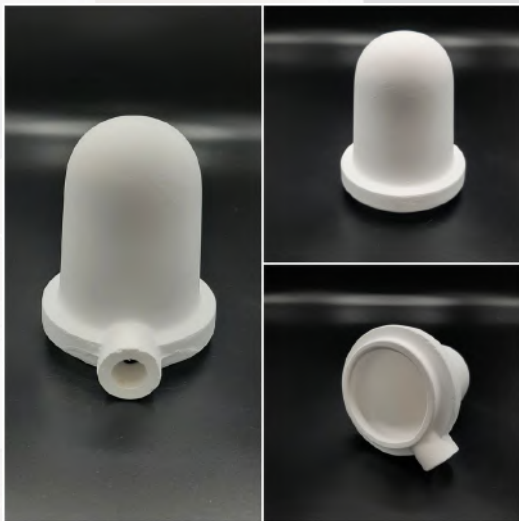
Description		
Tiger Item No.:		5160
Original Item No.:		A100.650
Machine Manufacturer		Galloni
Sizes in mm		
Height:		90
Ø Top:		90
Ø Bottom:		71
Ø Spout Opening:		11

Ceramic

Galloni



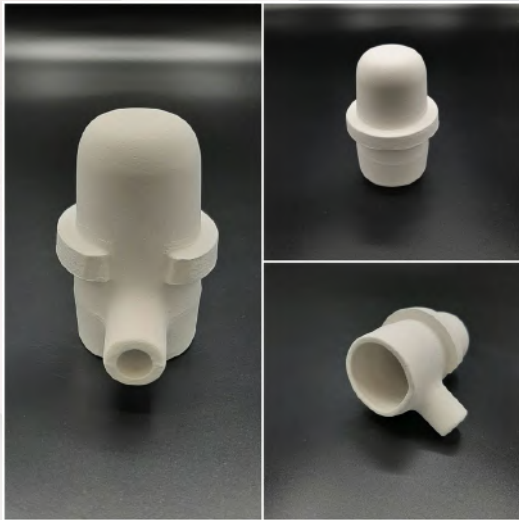
Description		
Tiger Item No.:		6522
Original Item No.:		A100.649
Machine Manufacturer		Galloni
Sizes in mm		
Height:		80
Ø Top:		68
Ø Bottom:		60
Ø Spout Opening:		14



Description		
Tiger Item No.:		6523
Original Item No.:		A100.652
Machine Manufacturer		Galloni
Sizes in mm		
Height:		100
Ø Top:		68
Ø Bottom:		57
Ø Spout Opening:		13

Ceramic

Heraeus



Description		
Tiger Item No.:		6356
Original Item No.:		/
Machine Manufacturer		Heraeus
Sizes in mm		
Height:		72
Ø Top:		42
Ø Bottom:		35
Ø Spout Opening:		9

Ceramic



Hot Platinum



Description		
Tiger Item No.:		5201
Original Item No.:		CRU-C-0011
Machine Manufacturer		Hot Platinum
Sizes in mm		
Height:		104
Ø Top:		82
Ø Bottom:		59
Ø Spout Opening:		/



Description		
Tiger Item No.:		5305
Original Item No.:		CRU-C 0005
Machine Manufacturer		Hot Platinum
Sizes in mm		
Height:		83
Ø Top:		60
Ø Bottom:		44
Ø Spout Opening:		10



Description		
Tiger Item No.:		6150
Original Item No.:		/
Machine Manufacturer		Hot Platinum
Sizes in mm		
Height:		62
Ø Top:		44
Ø Bottom:		32
Ø Spout Opening:		7

Ceramic

Hot Platinum



Description		
Tiger Item No.:		8250
Original Item No.:		CRU-C 0006
Machine Manufacturer		Hot Platinum
Sizes in mm		
Height:		112
Ø Top:		53
Ø Bottom:		42
Ø Spout Opening:		9

Ceramic

Linn



Description		
Tiger Item No.:		5700
Original Item No.:		SKQ-1
Machine Manufacturer		Linn
Sizes in mm		
Height:		117
Ø Top:		63
Ø Bottom:		45
Ø Spout Opening:		8



Description		
Tiger Item No.:		5710
Original Item No.:		DKV-2
Machine Manufacturer		Linn
Sizes in mm		
Height:		71,5
Ø Top:		38
Ø Bottom:		38
Ø Spout Opening:		7



Description		
Tiger Item No.:		5725
Original Item No.:		/
Machine Manufacturer		Linn
Sizes in mm		
Height:		102
Ø Top:		64
Ø Bottom:		56
Ø Spout Opening:		13

Ceramic

Linn



Description		
Tiger Item No.:		5748
Original Item No.:		/
Machine Manufacturer		Linn
Sizes in mm		
Height:		116
Ø Top:		62
Ø Bottom:		62
Ø Spout Opening:		11



Description		
Tiger Item No.:		5761
Original Item No.:		DK 2
Machine Manufacturer		Linn
Sizes in mm		
Height:		77
Ø Top:		40
Ø Bottom:		36
Ø Spout Opening:		10

Ceramic

Manfredi



Description		
Tiger Item No.:		5201
Original Item No.:		Y Pt 100
Machine Manufacturer		Manfredi
Sizes in mm		
Height:		104
Ø Top:		82
Ø Bottom:		59
Ø Spout Opening:		/



Description		
Tiger Item No.:		5245
Original Item No.:		Y Pt 35
Machine Manufacturer		Manfredi
Sizes in mm		
Height:		76
Ø Top:		58
Ø Bottom:		34
Ø Spout Opening:		8,5



Description		
Tiger Item No.:		5246
Original Item No.:		/
Machine Manufacturer		Manfredi
Sizes in mm		
Height:		72
Ø Top:		45
Ø Bottom:		34
Ø Spout Opening:		6

Ceramic

Manfredi



Description		
Tiger Item No.:		5252
Original Item No.:		C 15
Machine Manufacturer		Manfredi
Sizes in mm		
Height:		65
Ø Top:		48
Ø Bottom:		40
Ø Spout Opening:		8

Ceramic

Saed



Description		
Tiger Item No.:		6001
Original Item No.:		/
Machine Manufacturer		Saed
Sizes in mm		
Height:		69
Ø Top:		37
Ø Bottom:		32
Ø Spout Opening:		8



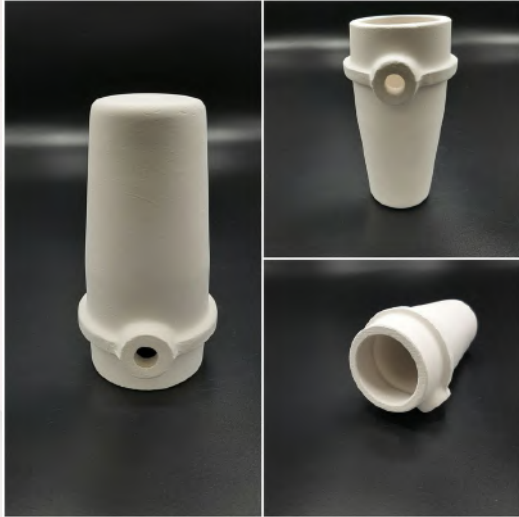
Description		
Tiger Item No.:		6002
Original Item No.:		/
Machine Manufacturer		Saed
Sizes in mm		
Height:		76
Ø Top:		50
Ø Bottom:		43
Ø Spout Opening:		10



Description		
Tiger Item No.:		6003
Original Item No.:		/
Machine Manufacturer		Saed
Sizes in mm		
Height:		92
Ø Top:		50
Ø Bottom:		43
Ø Spout Opening:		8

Ceramic

Saed



Description		
Tiger Item No.:		6004
Original Item No.:		/
Machine Manufacturer		Saed
Sizes in mm		
Height:		107
Ø Top:		51
Ø Bottom:		41
Ø Spout Opening:		9

Ceramic

Schultheiss



Description		
Tiger Item No.:		5501
Original Item No.:		/
Machine Manufacturer		Schultheiss
Sizes in mm		
Height:		87
Ø Top:		41
Ø Bottom:		39
Ø Spout Opening:		/

Ceramic

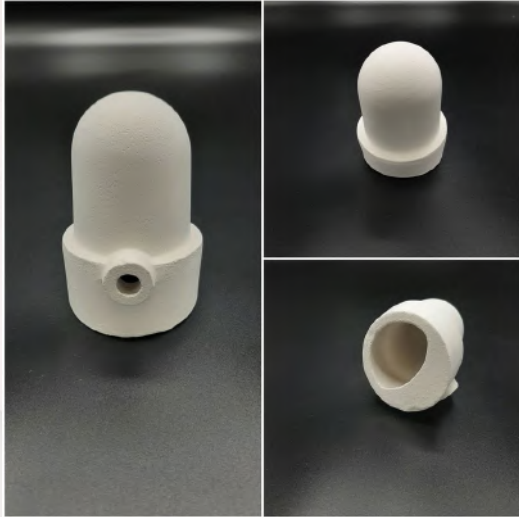
Seit



Description		
Tiger Item No.:		5305
Original Item No.:		/
Machine Manufacturer		Seit
Sizes in mm		
Height:		83
Ø Top:		60
Ø Bottom:		44
Ø Spout Opening:		10

Ceramic

Tannabe



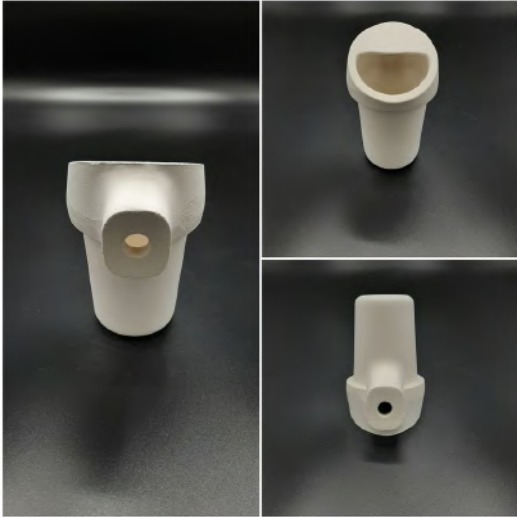
Description		
Tiger Item No.:		6801
Original Item No.:		/
Machine Manufacturer		Tanabe
Sizes in mm		
Height:		80
Ø Top:		52
Ø Bottom:		42
Ø Spout Opening:		7



Description		
Tiger Item No.:		6803
Original Item No.:		/
Machine Manufacturer		Tanabe
Sizes in mm		
Height:		80
Ø Top:		52
Ø Bottom:		42
Ø Spout Opening:		7

Ceramic

Tiger



Description		
Tiger Item No.:		8008
Fit:		MC 100
Machine Manufacturer		/
Sizes in mm		
Height:		93
Ø Top:		?
Ø Bottom:		42
Ø Spout Opening:		10



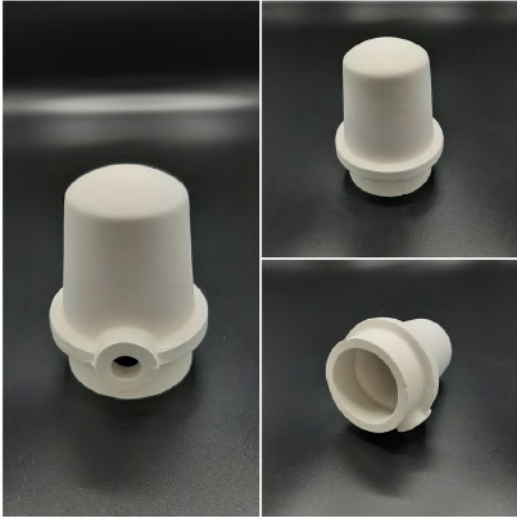
Description		
Tiger Item No.:		8010
Fit:		MC 100
Machine Manufacturer		/
Sizes in mm		
Height:		108
Ø Top:		56
Ø Bottom:		40
Ø Spout Opening:		10



Description		
Tiger Item No.:		8052
Fit:		MC 15
Machine Manufacturer		/
Sizes in mm		
Height:		63
Ø Top:		44
Ø Bottom:		32
Ø Spout Opening:		9

Ceramic

Tiger



Description		
Tiger Item No.:		8038
Original Item No.:		/
Machine Manufacturer		/
Sizes in mm		
Height:		78
Ø Top:		50
Ø Bottom:		43
Ø Spout Opening:		10



Description		
Tiger Item No.:		8039
Original Item No.:		/
Machine Manufacturer		/
Sizes in mm		
Height:		78
Ø Top:		50
Ø Bottom:		43
Ø Spout Opening:		10



Description		
Tiger Item No.:		8047
Original Item No.:		/
Machine Manufacturer		/
Sizes in mm		
Height:		86
Ø Top:		41
Ø Bottom:		35
Ø Spout Opening:		8

Ceramic

Tiger



Description		
Tiger Item No.:		8049
Original Item No.:		/
Machine Manufacturer		/
Sizes in mm		
Height:		78
Ø Top:		39
Ø Bottom:		35
Ø Spout Opening:		9



Description		
Tiger Item No.:		8050
Original Item No.:		/
Machine Manufacturer		/
Sizes in mm		
Height:		112
Ø Top:		53
Ø Bottom:		42
Ø Spout Opening:		9



Description		
Tiger Item No.:		8053
Original Item No.:		/
Machine Manufacturer		/
Sizes in mm		
Height:		78
Ø Top:		45
Ø Bottom:		34
Ø Spout Opening:		8

Ceramic

Tiger



Description		
Tiger Item No.:		8054
Original Item No.:		/
Machine Manufacturer		/
Sizes in mm		
Height:		57
Ø Top:		38
Ø Bottom:		32
Ø Spout Opening:		7



Description		
Tiger Item No.:		8055
Original Item No.:		/
Machine Manufacturer		/
Sizes in mm		
Height:		61
Ø Top:		44
Ø Bottom:		32
Ø Spout Opening:		6



Description		
Tiger Item No.:		8139
Original Item No.:		/
Machine Manufacturer		/
Sizes in mm		
Height:		78
Ø Top:		51
Ø Bottom:		43
Ø Spout Opening:		9

Ceramic

Tiger



Description		
Tiger Item No.:		8150
Original Item No.:		/
Machine Manufacturer		/
Sizes in mm		
Height:		112
Ø Top:		53
Ø Bottom:		42
Ø Spout Opening:		9



Description		
Tiger Item No.:		8250
Original Item No.:		/
Machine Manufacturer		/
Sizes in mm		
Height:		112
Ø Top:		53
Ø Bottom:		42
Ø Spout Opening:		9



Description		
Tiger Item No.:		8339
Original Item No.:		/
Machine Manufacturer		/
Sizes in mm		
Height:		78
Ø Top:		51
Ø Bottom:		43
Ø Spout Opening:		9

Ceramic

Ultraflex



Description		
Tiger Item No.:		5138
Original Item No.:		2DET-015-000-KF
Machine Manufacturer		Ultraflex
Sizes in mm		
Height:		81
Ø Top:		51
Ø Bottom:		41
Ø Spout Opening:		9



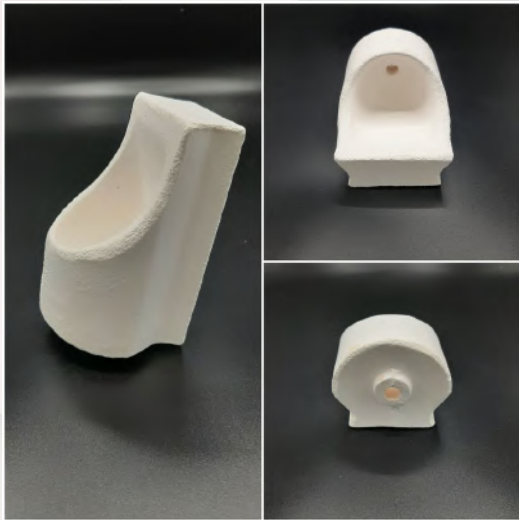
Description		
Tiger Item No.:		5305
Original Item No.:		2DET-017-000-KD
Machine Manufacturer		Ultraflex
Sizes in mm		
Height:		83
Ø Top:		60
Ø Bottom:		44
Ø Spout Opening:		10



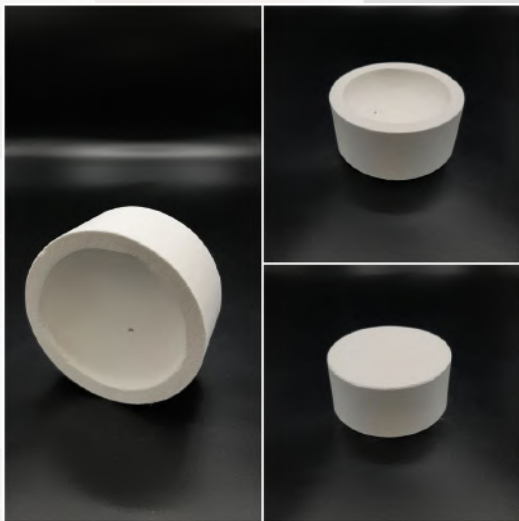
Description		
Tiger Item No.:		6004
Original Item No.:		2DET-16-000-KM
Machine Manufacturer		Ultraflex
Sizes in mm		
Height:		107
Ø Top:		51
Ø Bottom:		41
Ø Spout Opening:		9

Ceramic

Wesco



Description		
Tiger Item No.:		6700
Original Item No.:		Type D
Machine Manufacturer		Wesco
Sizes in mm		
Height:		56
Ø Top:		85
Ø Bottom:		50
Ø Spout Opening:		8



Description		
Tiger Item No.:		6710
Original Item No.:		/
Machine Manufacturer		Wesco
Sizes in mm		
Height:		35
Ø Top:		75
Ø Bottom:		75
Ø Spout Opening:		/

Ceramic

Wieland



Description		
Tiger Item No.:		6201
Original Item No.:		/
Machine Manufacturer		Wieland
Sizes in mm		
Height:		99
Ø Top:		35
Ø Bottom:		29
Ø Spout Opening:		4

Ceramic

Yasui



Description		
Tiger Item No.:		5601
Original Item No.:		/
Machine Manufacturer		Yasui
Sizes in mm		
Height:		82
Ø Top:		55
Ø Bottom:		41
Ø Spout Opening:		8



Ceramic

Yoshida



Description		
Tiger Item No.:		5801
Original Item No.:		YGP 5AE
Machine Manufacturer		Yoshida
Sizes in mm		
Height:		53
Ø Top:		53
Ø Bottom:		40
Ø Spout Opening:		/



Description		
Tiger Item No.:		5802
Original Item No.:		Gapman
Machine Manufacturer		Yoshida
Sizes in mm		
Height:		43
Ø Top:		43
Ø Bottom:		30
Ø Spout Opening:		/



Ceramic



We have a big range of crucibles. Customized sizes and shapes are possible on request.



ZrO Ceramic

Item No.:	Description	Outer Diameter in mm	Height in mm	Inner Diameter in mm	Height inside in mm
7701.33	Zirconium oxide	42	70	30	60
7702.88	Aluminum oxide	64	115	50	105
7703.38	ZrO ₂ / Al ₂ O ₃ Set # 0	64	135	30	60
7711.33	Zirconium oxide	56	88	38	78
7712.88	Aluminum oxide	86	103	66	93
7713.38	ZrO ₂ / Al ₂ O ₃ Set # 1	86	123	38	78
7721.33	Zirconium oxide	70	115	50	105
7722.88	Aluminum oxide	100	135	80	125
7723.38	ZrO ₂ / Al ₂ O ₃ Set # 2	100	155	50	105
7731.33	Zirconium oxide	80	142	58	128
7732.88	Aluminum oxide	110	162	90	155
7733.38	ZrO ₂ / Al ₂ O ₃ Set # 3	110	192	58	128
7741.33	Zirconium oxide	98	170	77	155
7742.88	Aluminum oxide	128	205	108	195
7743.38	ZrO ₂ / Al ₂ O ₃ Set # 4	128	235	77	155
7751.33	Zirconium oxide	122	245	98	232
7752.88	Aluminum oxide	150	300	130	290
7753.38	ZrO ₂ / Al ₂ O ₃ Set # 5	150	330	98	232
7761.33	Zirconium oxide	150	250	125	230
7762.88	Aluminum oxide	196	310	166	295
7763.38	ZrO ₂ / Al ₂ O ₃ Set # 6	196	360	125	230



Graphite

Ceia



Description		
Tiger Item No.:		7010
Type:		Ceia 5 Kg
Machine Manufacturer:		Ceia
Sizes in mm		
Height:		165
Ø Top:		121
Ø Bottom:		114
Ø Spout Opening:		12

Graphite

Indutherm



Description		
Tiger Item No.:		5491
Type:		VC 400
Machine Manufacturer:		Indutherm
Sizes in mm		
Height:		120
Ø Top:		68
Ø Bottom:		68
Ø Spout Opening:		8



Description		
Tiger Item No.:		5490
Type:		VC 600
Machine Manufacturer:		Indutherm
Sizes in mm		
Height:		120
Ø Top:		78
Ø Bottom:		78
Ø Spout Opening:		8



Description		
Tiger Item No.:		5494
Type:		VC 600 big
Machine Manufacturer:		Indutherm
Sizes in mm		
Height:		130
Ø Top:		88
Ø Bottom:		88
Ø Spout Opening:		8

Graphite

Indutherm



Description		
Tiger Item No.:		5495
Type:		VC 650 S-Shape
Machine Manufacturer:		Indutherm
Sizes in mm		
Height:		120
Ø Top:		78
Ø Bottom:		30
Ø Spout Opening:		8



Description		
Tiger Item No.:		5451
Type:		MC 20
Machine Manufacturer:		Indutherm
Sizes in mm		
Height:		76
Ø Top:		44
Ø Bottom:		32
Ø Spout Opening:		10

Graphite

Indutherm



Description		
Tiger Item No.:		5496
Type:		Shape 650 big
Machine Manufacturer:		Indutherm
Sizes in mm		
Height:		180
Ø Top:		12
Ø Bottom:		15
Ø Hole:		6/164



Description		
Tiger Item No.:		5492
Type:		big/round
Machine Manufacturer:		Indutherm
Sizes in mm		
Height:		180
Ø Top:		12
Ø Bottom:		15
Ø Hole:		/



Description		
Tiger Item No.:		5498
Type:		big/round + hole
Machine Manufacturer:		Indutherm
Sizes in mm		
Height:		175
Ø Top:		12
Ø Bottom:		12
Ø Hole:		5

Graphite

Indutherm



Description		
Tiger Item No.:		5493
Type:		thin/tip
Machine Manufacturer:		Indutherm
Sizes in mm		
Height:		180
Ø Top:		12
Ø Bottom:		12
Ø Hole:		/



Description		
Tiger Item No.:		5497
Type:		thin/round
Machine Manufacturer:		Indutherm
Sizes in mm		
Height:		180
Ø Top:		12
Ø Bottom:		12
Ø Hole:		/



Description		
Tiger Item No.:		5499
Type:		big/round + hole
Machine Manufacturer:		Indutherm
Sizes in mm		
Height:		180
Ø Top:		12
Ø Bottom:		15
Ø Hole:		6/159

Graphite

Schultheiss



Description		
Tiger Item No.:		5541
Type:		VPC 40
Machine Manufacturer:		Schultheiss
Sizes in mm		
Height:		76
Ø Top:		52
Ø Bottom:		14
Ø Spout Opening:		6



Description		
Tiger Item No.:		5561
Type:		VPC 400
Machine Manufacturer:		Schultheiss
Sizes in mm		
Height:		136
Ø Top:		74
Ø Bottom:		23
Ø Spout Opening:		7

Graphite

Schultheiss



Description		
Tiger Item No.:		5563
Type:		big
Machine Manufacturer:		Schultheiss
Sizes in mm		
Height:		160
Ø Top:		12
Ø Bottom:		15
Ø Hole:		/



Description		
Tiger Item No.:		5562
Type:		flat tip + hole
Machine Manufacturer:		Schultheiss
Sizes in mm		
Height:		165
Ø Top:		12
Ø Bottom:		12
Ø Hole:		4/155



Description		
Tiger Item No.:		5542
Type:		thin
Machine Manufacturer:		Schultheiss
Sizes in mm		
Height:		92
Ø Top:		11
Ø Bottom:		11
Ø Hole:		6/81

Graphite

Tiger



Description		
Tiger Item No.:		7310
Type:		1 Kg Crucible
Machine Manufacturer:		/
Sizes in mm		
Height:		125
Ø Top:		64
Ø Bottom:		50
Ø Spout Opening:		8



Description		
Tiger Item No.:		7320
Type:		2 Kg Crucible
Machine Manufacturer:		/
Sizes in mm		
Height:		153
Ø Top:		75
Ø Bottom:		56
Ø Spout Opening:		9



Description		
Tiger Item No.:		7330
Type:		3 Kg Crucible
Machine Manufacturer:		/
Sizes in mm		
Height:		170
Ø Top:		77
Ø Bottom:		62
Ø Spout Opening:		14

Graphite

Tiger



Description		
Tiger Item No.:		7020
Type:		/
Machine Manufacturer:		/
Sizes in mm		
Height:		111
Ø Top:		50
Ø Bottom:		40
Ø Spout Opening:		/

Graphite

Yasui



Description		
Tiger Item No.:		5621
Type:		K2
Machine Manufacturer:		Yasui
Sizes in mm		
Height:		129
Ø Top:		70
Ø Bottom:		23
Ø Spout Opening:		8



Description		
Tiger Item No.:		5625
Type:		K2 next KW5
Machine Manufacturer:		Yasui
Sizes in mm		
Height:		113
Ø Top:		70
Ø Bottom:		23
Ø Spout Opening:		8



Description		
Tiger Item No.:		5658
Type:		K2 next KW8
Machine Manufacturer:		Yasui
Sizes in mm		
Height:		131
Ø Top:		70
Ø Bottom:		23
Ø Spout Opening:		8

Graphite

Yasui



Description		
Tiger Item No.:		5622
Type:		K2
Machine Manufacturer:		Yasui
Sizes in mm		
Height:		150
Ø Top:		13/15
Ø Bottom:		15
Ø Hole:		7/135



Description		
Tiger Item No.:		5632
Type:		K3
Machine Manufacturer:		Yasui
Sizes in mm		
Height:		133
Ø Top:		13/16
Ø Bottom:		16
Ø Hole:		7/119



Description		
Tiger Item No.:		5642
Type:		K5
Machine Manufacturer:		Yasui
Sizes in mm		
Height:		133
Ø Top:		13/16
Ø Bottom:		16
Ø Hole:		7/119

Graphite

Yasui



Description		
Tiger Item No.:		5626
Type:		K2 next KW5/8
Machine Manufacturer:		Yasui
Sizes in mm		
Height:		146
Ø Top:		13/16
Ø Bottom:		16
Ø Hole:		7/137



Description		
Tiger Item No.:		5681
Type:		KT 17
Machine Manufacturer:		Yasui
Sizes in mm		
Height:		152
Ø Top:		13/16
Ø Bottom:		14
Ø Hole:		7/141



Description		
Tiger Item No.:		5683
Type:		KT 18
Machine Manufacturer:		Yasui
Sizes in mm		
Height:		149
Ø Top:		13/16
Ø Bottom:		12
Ø Hole:		4/155

Clay Graphite

Item No.:	Description	Height in mm	Outer Diameter in mm	Inner Diameter in mm
441001	A1	90	90	55
441002	A2	110	102	60
441003	A3	130	115	75
441004	A4	140	115	75
441005	A5	150	125	85
441006	A6	165	130	90
441008	A8	180	155	110
441010	A10	200	160	115
441012	A12	210	170	120
441016	A16	230	185	125
441020	A20	255	200	140
441025	A25	260	220	150
441030	A30	290	230	160
441035	A35	300	240	170
441040	A40	310	260	190
441050	A50	330	270	195
441060	A50	345	285	200
441070	A70	360	295	205
441080	A80	375	305	215
441090	A90	380	315	225
441100	A100	400	325	230
441120	A120	410	345	245
441150	A150	450	370	260
441200	A200	500	400	285
441250	A250	515	420	300
441300	A300	540	440	315
441350	A350	590	475	330
441400	A400	600	500	340
441500	A500	650	510	350
441600	A600	680	530	380
441800	A800	800	560	380



Investment Powder



PRESTIGE OPTIMA INVESTMENT POWDER

FOR CASTING RESIN & PLASTIC PATTERNS

Prestige OPTIMA™ is a significant breakthrough by Certus to develop a new generation, gypsum bonded investment that consistently provides superior, ultra smooth casting surfaces for a variety of today's pattern materials including Standard injection waxes. Also for carving waxes, resin / plastic patterns, wax based polymers and hybrid wax.



PRESTIGE ORO INVESTMENT POWDER

FOR CASTING PALLADIUM YELLOW & WHITE GOLD UP TO 22 CARAT

Prestige ORO™ is a ultra-premium gypsum bonded investment developed and perfected for the casting of gold up to 22K. To achieve the smoothest casting surface possible, ORO™ incorporates specially graded refractory ingredients along with specialized control chemicals to make it the most user-friendly investments on the market today.



PRESTIGE UNICAST INVESTMENT POWDER

FOR CASTING YELLOW AND WHITE GOLD UP TO 18 CARAT

Prestige UNICAST™ is a premium quality gypsum bonded investment in the prestige line of investments designed for users that prefer one investment for multiple casting applications. Prestige UNICAST™ is a perfect choice for casting gold up to 18k and above for producing the most complex designs in sterling and fine silver.



PRESTIGE SIGMA INVESTMENT POWDER

FOR CASTING SILVER BRASS, AND BRONZE

Prestige SIGMA™ is a high value, low cost gypsum bonded investment powder developed by Certus to provide the user and industry with an investment powder engineered specially to eliminate costly surface defects associated with casting the most difficult designs and shapes cast in silver and bronze.



Investment Powder



FERRO-VEST VHT INVESTMENT POWDER

FOR CASTING PLATINUM AND STAINLESS STEEL

FERRO-VEST VHT is a superior two-part, high temperature investment developed to give premium results casting platinum, palladium & stainless steel alloys and metals that melt in excess of 1500 °C. - 2700 °C. Ferro-Vest VHT investment powder supplies superior, consistent results and unlike other two-part high temperature investments on the market, comes complete with special proprietary additives that eliminate air bubbles and will provide a far smoother cast surface that requires less finishing than with other brands.



PRESTIGE-POWERCAST INVESTMENT POWDER

FOR CASTING INDUSTRIAL METALS

Prestige POWERCAST™ is a gypsum bonded investment Powder for industrial casting. This was specially developed for casting industrial metals like aluminium, bronze, copper, brass and their alloys. The investment Powder is also suitable for casting sculptures.

Photo coming soon



Wax



ALL SEASONS JEWELRY INJECTION WAX

"All Season" Reliability - Perfect for use all year round in all types of climates.

Reproduction - Captures sharpest details of the most intricate designs.

Smooth Finish - Provides a high gloss surface finish for superior castings that require less finishing.

Complete Fills - High fluidity fills the most complex designs.

Easy View - Any imperfections present are easy to identify for repair.

Low Shrinkage - Low injection temperature (68°C) for less shrinkage and sink in thick sections.

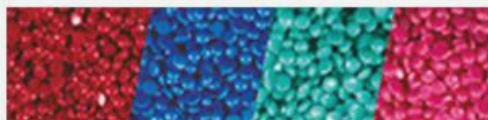
Versatile - One wax for everything. unique formula works perfectly for all types of patterns. Great for everything. From thick too thin to fine filigree.

Extra Long Shelf Life - Properly stored, patterns made with "All Seasons" injection wax will remain ready for use almost indefinitely.

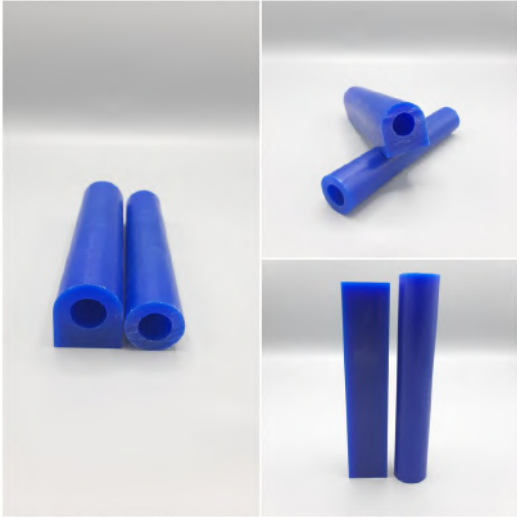
Low Ash Content - High purity of ingredients and near zero ash content provide cleaner burnouts for a superior casting surface.



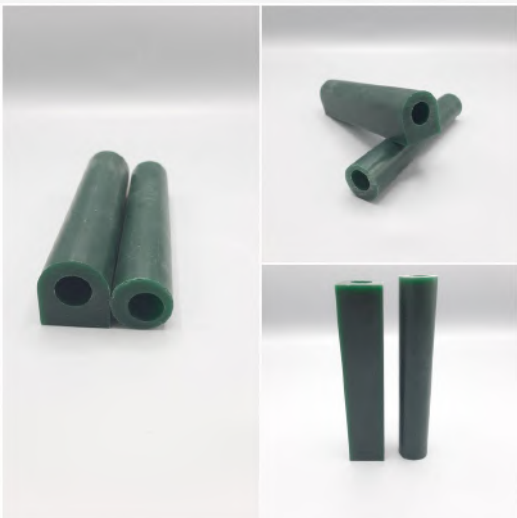
Prestige All Seasons Waxes comes in 20Kg. plastic lined poly sack.



Wax



Wax Tube Blue	Item No.:
Center Hole	27102
Flat Top	27132



Wax Tube Green	Item No.:
Off-Center	27111
Flat Top	27131



Carving Wax Green	Item No.:
Slices Bars	27002

Resin



Resin	Item No.:
SLA 250 g	39025
SLA 500 g	39050
SLA 1000 g	39100



Resin	Item No.:
LCD 250 g	38025
LCD 500 g	38050
LCD 1000 g	38100



To show our quality we could provide you with some printed samples!

Casting Equipment



Blasting Sand 25 Kg	Item No.:
glass round 000-050 my	41001
glass round 050-100 my	41002
glass round 070-110 my	41003
glass round 100-150 my	41004
glass round 150-200 my	41005
glass round 100-200 my	41006
glass round 040-070 my	41007

Pneumatic Knives	Item Nr.:
edged at the middle	48006
edged at the side	48007

Alloys	Item No.:
Brass	MS67
Tombac	Tomb

Sprue Bases	Item No.:
Ø 90 mm	42001
Ø 100 mm	42002
Ø 110 mm	42003
Ø 120 mm	42004

Casting Equipment



Silicon	Item No.:
5 kg rubber + 0,5 Kg hardener	33002
Spray 400 ml can	34011

Surgical Blades	Item No.:
Swann Morton No. 11 (100 pcs.)	34041

Flask Foil	Item No.:
Flask / 90 mm \varnothing 170 mm height	FF090/170
Flask / 100 mm \varnothing 150 mm height	FF100/150
Flask / 100 mm \varnothing 200 mm height	FF100/200
Flask / 100 mm \varnothing 250 mm height	FF100/250
Flask / 110 mm \varnothing 250 mm height	FF110/250
Flask / 125 mm \varnothing 200 mm height	FF125/200

Contact Information

Web:

www.Tiger-x.com

www.Tiger-x.de

Mail:

info@tiger-x.com

Phone:

+49 7231 977250

